

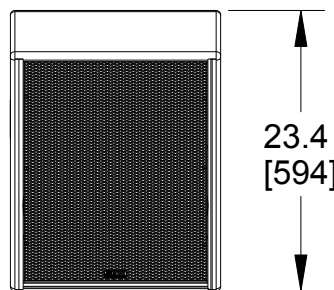
1

2

3



4

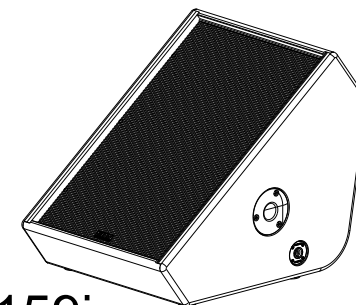
REV	CHANGE NUMBER	DATE
A	ECOWHT9558	8/2/13



TOP

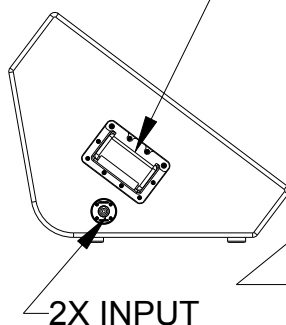
NOTES:

1. SYMBOL  INDICATES FEET.
2. SYMBOL  INDICATES CENTER OF BALANCE.
3. WEIGHT APPROX. 49 lb [22.2 kg].
4. SHIPPING WEIGHT APPROX. 65 lb [29.5 kg].



VFM159i

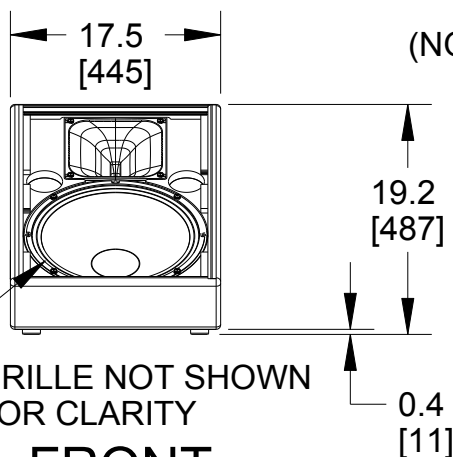
2X HANDLE



2X INPUT

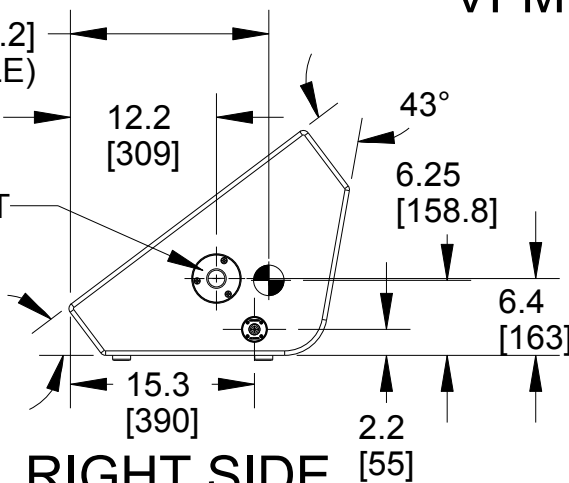
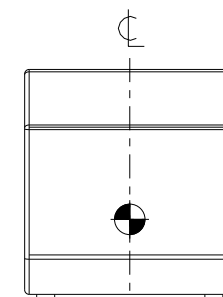
GRILLE NOT SHOWN
FOR CLARITY

FRONT

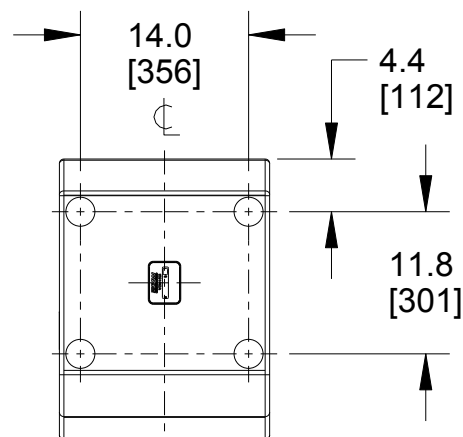
12.88 [327.2]
(NOT TO SCALE)

TOP HAT

37°

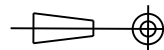
RIGHT SIDE
DIMENSIONS APPLY
TO BOTH SIDES

BACK



BOTTOM

THIRD ANGLE PROJECTION



THE INFORMATION CONTAINED
HEREIN IS PROPRIETARY AND
CONFIDENTIAL PROPERTY OF
LOUD TECHNOLOGIES, INC.
ALL RIGHTS RESERVED

UNLESS OTHERWISE SPECIFIED:
ALL DIMENSIONS ARE IN INCHES
DUAL [MM] DIMENSIONS
FOR REF ONLY

TOLERANCE IN INCHES
LINEAR ± 0.13 in / ± 3.3 mm
ANGLES $\pm 1^\circ$

(X.XX) = REF DIMS
NO TOLERANCE IMPLIED

TSC = THEORETICAL SHARP CORNER

DIMENSIONS ACROSS CENTERLINES
TO BE SYMMETRICAL

EAW

www.eaw.com

TITLE:

DWG CUSTOMER VFM159i
[MECHANICAL SPECIFICATION]

A

SHEET 1 OF 1

SCALE:
0.063

DRAWING NUMBER:

2042016-CD

REVISION:

A

PRO ENGINEER