

EVOX 8

ACTIVE TWO-WAY ARRAY

DESCRIPTION

Evox 8 is a portable compact size sound reinforcement system. Evox 8 combines the quality and reliability of RCF transducers with a very high amplification power. The system features eight 2.0" full range transducers in the line source satellite and a deep sounding 12" woofer in a bass reflex enclosure. The system is designed to be the perfect high output solution for live music and DJs. The unique vocal attitude and SPL make Evox 8 the perfect tool for larger presentations, corporate events and congresses.



FEATURES

- 1400 Watt
- 128 dB max SPL
- 40 Hz 20 kHz frequency response
- 12" Woofer, 2.5" v.c.
- 8 x 2" Ultra compact fullrange, 1.0 v.c.
- 120° x 30° slightly tilted pattern control
- Innovative DSP processing
- Pole mountable, easy set-up and transportation

TECHNICAL SPECIFICATIONS

| | | |
|----------------------------------|----------------------------|--------------------------|
| Acoustical specifications | Frequency Response: | 45 Hz ÷ 20000 Hz |
| | Max SPL @ 1m: | 128 dB |
| | Horizontal coverage angle: | 120° |
| | Vertical coverage angle: | 30° |
| Transducers | Fullrange: | 8 x 2.0", 1.0" v.c |
| | Woofers: | 12", 2.5" v.c |
| Input/Output section | Input signal: | bal/unbal |
| | Input connectors: | XLR, Jack |
| | Output connectors: | XLR |
| | Input sensitivity: | -2 dBu/+4 dBu |
| Processor section | Crossover Frequencies: | 220 Hz |
| | Protections: | Thermal, RMS |
| | Limiter: | Soft Limiter |
| | Controls: | Volume, EQ, phase, Xover |
| Power section | Total Power: | 1400 W Peak, 700 W RMS |
| | High frequencies: | 400 W Peak, 200 W RMS |
| | Low frequencies: | 1000 W Peak, 500 W RMS |
| | Cooling: | Convection |
| | Connections: | VDE |
| Standard compliance | CE marking: | Yes |
| Physical specifications | Cabinet/Case Material: | Baltic birch plywood |
| | Hardware: | 2 x M6 |
| | Handles: | 1 Top |
| | Pole mount/Cap: | Yes |
| | Color: | Black |
| Size | Height: | 530 mm / 20.87 inches |
| | Width: | 346 mm / 13.62 inches |
| | Depth: | 459 mm / 18.07 inches |
| | Weight: | 23.8 kg / 52.47 lbs |
| Shipping informations | Package Height: | 580 mm / 22.83 inches |
| | Package Width: | 400 mm / 15.75 inches |
| | Package Depth: | 570 mm / 22.44 inches |
| | Package Weight: | 27.7 kg / 61.07 lbs |



PART NUMBER

- **13000443**

EVOX 8

115V, Black

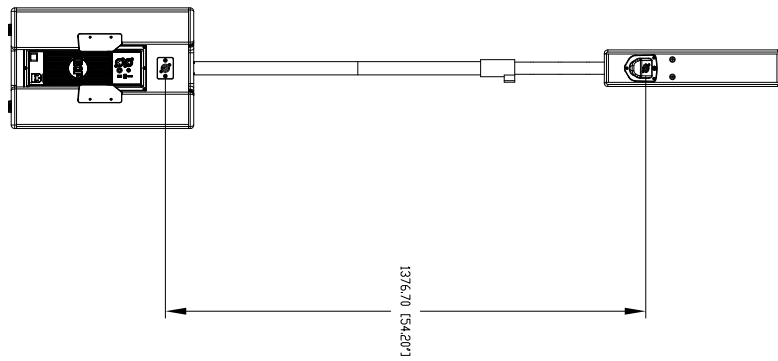
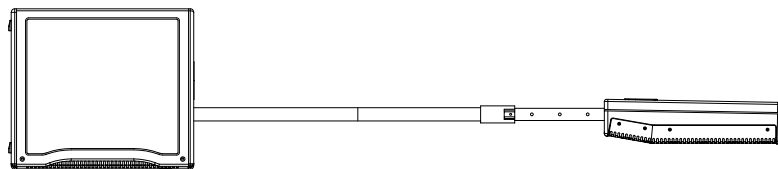
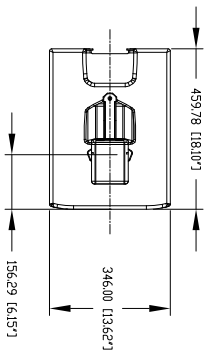
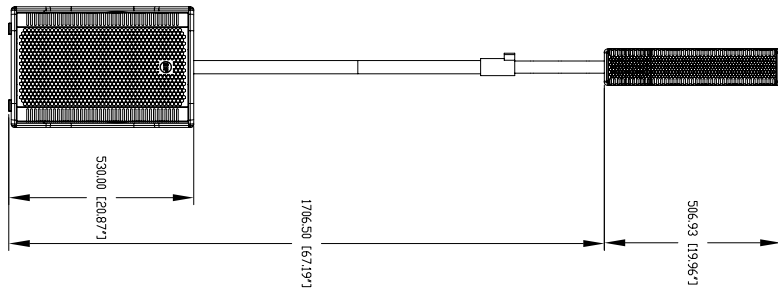
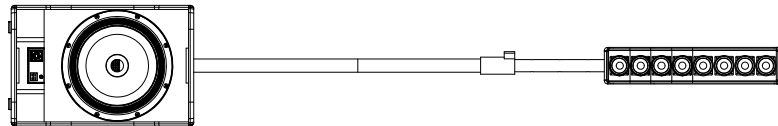
EAN 8024530012373

- **13000442**

EVOX 8

220-240V, Black

EAN 8024530012151



EVOX 8

ACCESSORIES



COVER CVR EVOX 8

PART NUMBER **13360305**
EAN: 8024530012359
