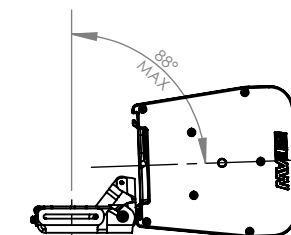


NOTES:

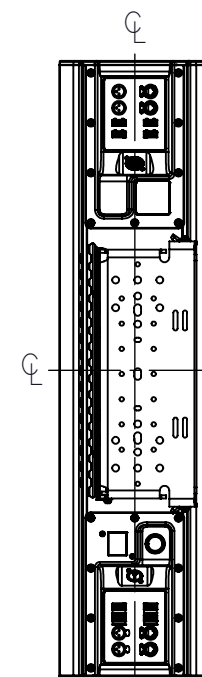
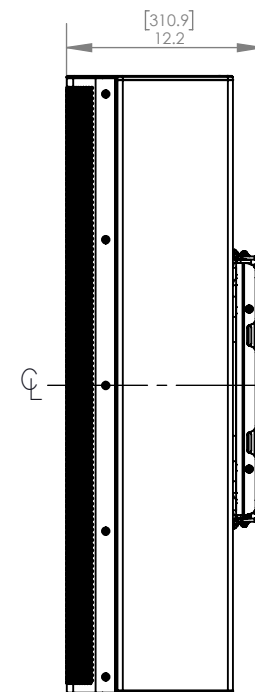
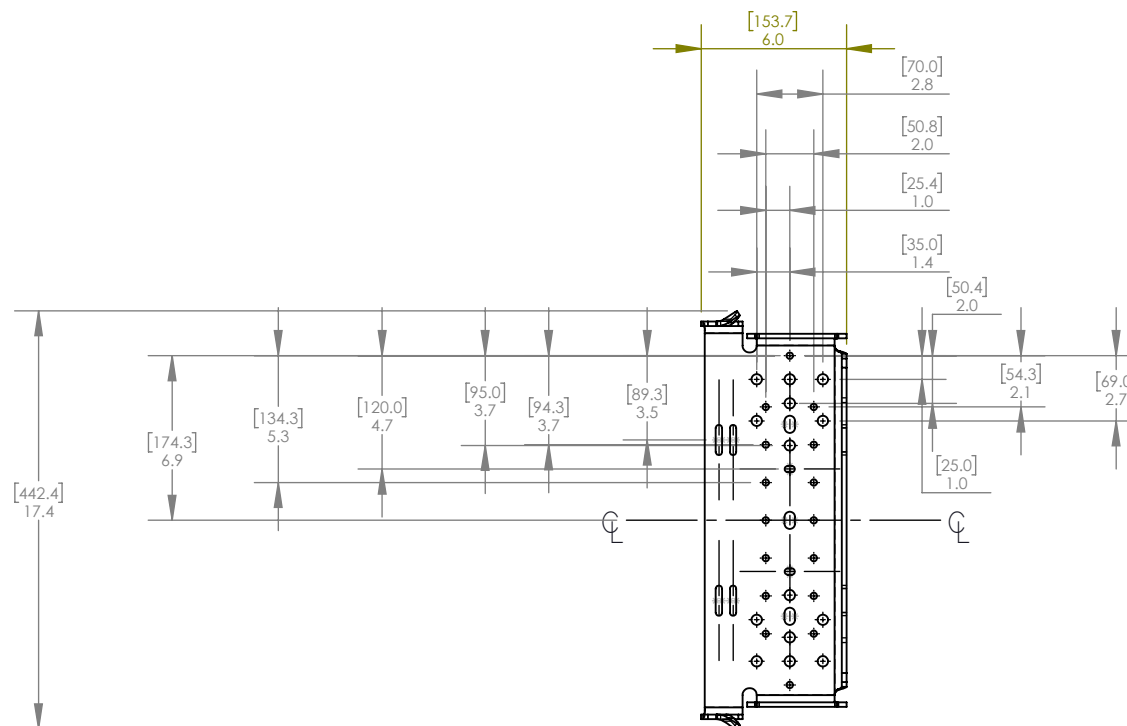
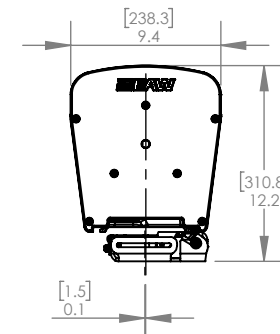
1. **BRACKET SHOWN MOUNTED ON LEFT REAR TRACK.
CAN ALSO BE MOUNTED ON RIGHT REAR TRACK.**
2. WORKING LOAD LIMIT (W.L.L.) 32 kg. [70 lb.]
3. APPROX. WEIGHT 4.6 kg. [10.2 lb.]
4. APPROX. SHIPPING WEIGHT 9.3 kg. [20.4 lb.]
5. LOUDSPEAKER NOT INCLUDED.
6. PROPER INSTALLATION REQUIRED. PLEASE REFER TO
INSTALLATION INSTRUCTIONS OR CONTACT APPLICATION
SUPPORT GROUP FOR FURTHER INFORMATION.
7. W.L.L. APPLIES ONLY TO INSTALLATIONS IN WHICH THE
STUDS USED TO MOUNT THE BRACKET TO THE LOUD-
SPEAKER ARE VERTICALLY ORIENTED. THIS BRACKET
IS NOT RECOMMENDED FOR INSTALLATIONS WHERE
THIS AXIS IS HORIZONTAL.

REVISIONS

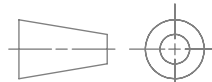
| REV | DESCRIPTION | APPR / DATE |
|-----|-------------|-------------|
| 100 | ECOEAW0794 | 9/27/21 |



MAX OPEN PIVOT CAN ALSO BE
OPPOSITE DIRECTION IF
MOUNTED IN RIGHT REAR TRACK



THIRD ANGLE PROJECTION



THIS DRAWING IS THE PROPERTY
OF EAW AND SHALL NOT BE COPIED,
REPRODUCED, OR USED AS THE
BASIS FOR MANUFACTURE OR SALE
OF APPARATUS WITHOUT WRITTEN
AUTHORIZATION.
DO NOT SCALE DRAWING.

UNLESS OTHERWISE SPECIFIED:
ALL DIMENSIONS ARE IN MILLIMETERS
DUAL [INCHES] DIMENSIONS FOR REF ONLY

TOLERANCE IN MILLIMETERS
X.±.8 X.X±.4 X.XX±.15
FRACTIONS ±1/32
ANGLES ±1/2°
(X.XX) = REF DIMS
NO TOLERANCE IMPLIED

TSC = THEORETICAL SHARP CORNER

DIMENSIONS ACROSS CENTERLINES
TO BE SYMMETRICAL

EAW

www.eaw.com

TITLE: **DRAWING CUSTOMER
KIT WALL-BRACKET [AC6]
[MECHANICAL SPECIFICATION]**

A

SHEET 1 OF 1

SCALE: 1:12

DWG. NO. 2071359-cd REV 100