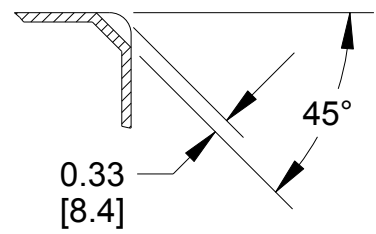
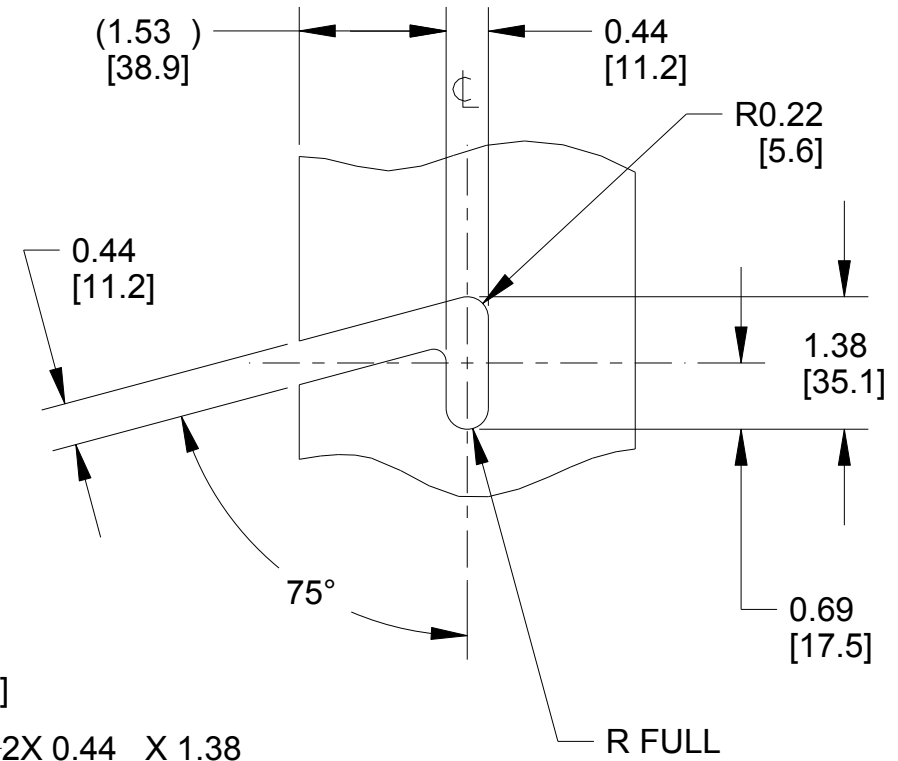
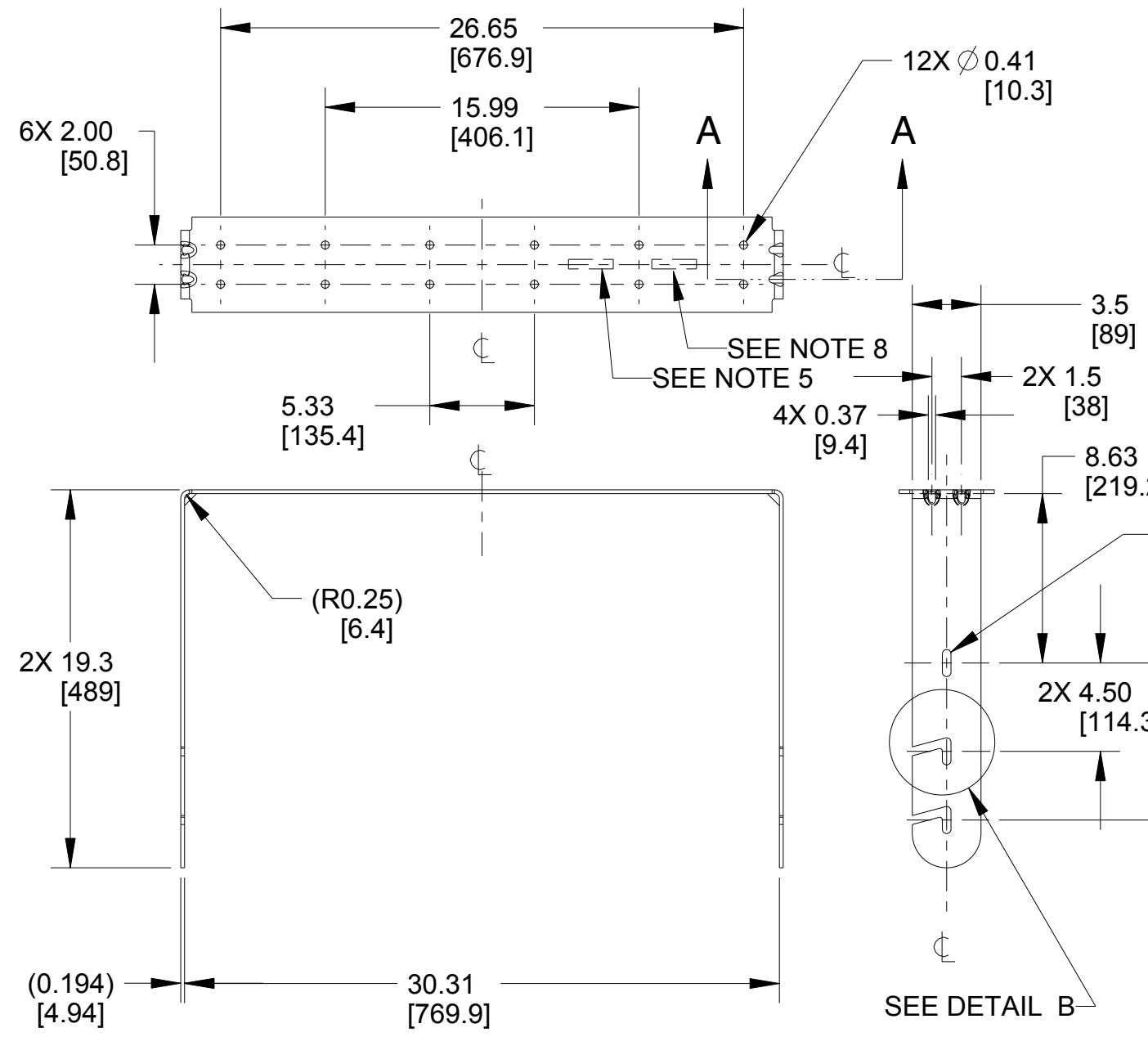


- NOTES:
1. MATERIAL: 6 GA. 0.194 [4.94] C.R.S.
  2. REMOVE BURRS AND SHARP EDGES PRIOR TO FINISH.
  3. PARTS TO BE CLEANED AND FREE OF GREASE AND DEBRIS.
  4. FINISH: POWDERCOAT PER BOM.
  5. LOUD PART NUMBER, CURRENT REVISION AND DATE MANUFACTURED TO BE STAMPED, LABELED OR PERMANENTLY MARKED WHERE SHOWN IN A CONTRASTING COLOR. LETTERS TO BE .12 [3.2 mm] TALL MIN.
  6. MINIMUM BEND RADIUS 0.25 UNLESS OTHERWISE SPECIFIED.
  7. LATEST REVISION OF 3D CAD FILE (SAME REVISION AS 2D DRAWING FILE) TAKES PRECEDENCE OVER 2D DRAWING FILE.
  8. SUPPLIER I.D. TO BE PERMANENTLY MARKED WHERE SHOWN.
  9. THIS ITEM MUST BE COMPLIANT WITH EU DIRECTIVE 2002/95/EC (RoHS). USE ONLY RoHS COMPLIANT MATERIALS AND FINISHES.

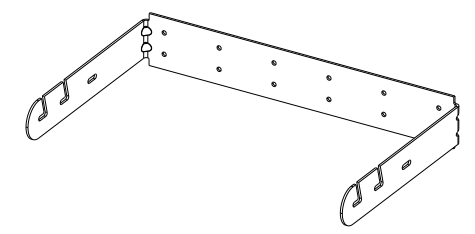


**SECTION A-A**  
SCALE 0.250  
4X



**DETAIL B**  
SCALE 0.500  
4X

REV	DESCRIPTION
A	RELEASED FROM REV 1 WITH NO CHANGES PER DSRWHT366P, SEE DSR #03-801 MELANIE 7/8/03
B	4X .44 WIDE ACCESS CHANNELS ADDED TO SLOTS PER ECOWHT2950 MELANIE 7/28/03
C	ADDED QC LAYER AND CHANGED TOLERANCE BLOCK PER ECOWHT3859 MELANIE 7/29/05
D	CONVERTED FROM 2D VELLUM DWG TO PRO ENGINEERING DWG BASED ON 3D MODEL. MIRRORED L-SLOTS, SEE ZONE A-3 AND DETAIL B. RE-DIMENSIONED DRAWING. CHANGED MATERIAL FROM .194 CRS TO .188 TYPE 304 SS, SEE NOTE 1. CHANGED FINISH NOTE 4. UPDATED NOTE 5. REMOVED NOTE 6 AND ADDED NEW NOTE 6 AND NOTES 7, 8, & 9. REMOVED "I" AND UPDATED DWG DESCRIPTION, SEE TITLE BLOCK. UPDATED DWG FORMAT. PER ECOWHT4751 (SEE DSR #07-027) DM 8/6/07
E	MATERIAL WAS .188 TYPE 304 SS. PER ECOWHT7330 RTD 2/14/11
F	CHANGED NOTE 4 TO "POWDERCOAT PER BOM" PER ECOWHT8592 NRL 5/2/12



<p>THIRD ANGLE PROJECTION</p>	<p>UNLESS OTHERWISE SPECIFIED: ALL DIMENSIONS ARE IN INCHES DUAL [MM] DIMENSIONS FOR REF ONLY</p> <p>TOLERANCE IN INCHES X.X ± .05 X.XX ± .015 X.XXX ± .005 FRACTIONS ± 1/32 ANGLES ± 1/2°</p> <p>(X.XX) = REF DIMS NO TOLERANCE IMPLIED</p> <p>TSC = THEORETICAL SHARP CORNER DIMENSIONS ACROSS CENTERLINES TO BE SYMMETRICAL</p>	<p>REVISION CONTROL FOR THIS DOCUMENT IS MAINTAINED IN LOUD TECHNOLOGIES' PRODUCT LIFECYCLE MANAGEMENT APPLICATION.</p> <p>ALL APPROVAL INFORMATION IS RECORDED ELECTRONICALLY</p> <p>DRAWN BY: C.W. FIELDS</p> <p>DATE: 11/28/05</p>	<p>LOUD Technologies Inc. ONE MAIN STREET, WHITINSVILLE, MA 01588 USA</p> <p>TITLE: <b>U-BRKT WALLMOUNT UBKT2353</b></p>